



GAT MONTHLY MEMBERSHIP PROGRESS REPORT

Results as of: 2/28/2022

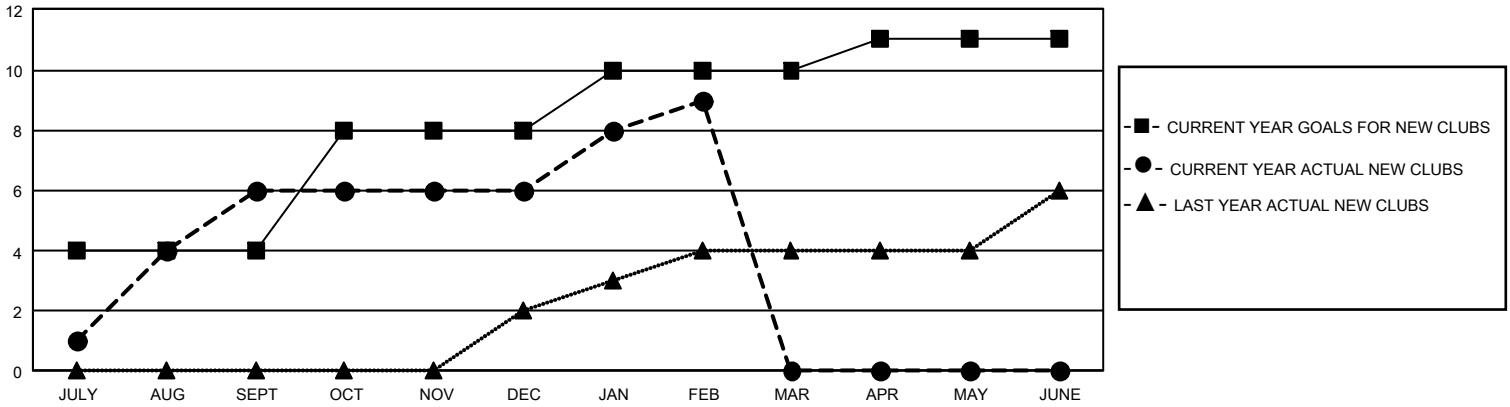
GMT Constitutional Area 5 - E, Group P

REPORT DOES NOT INCLUDE CLUBS IN UNDISTRICTED AREAS.

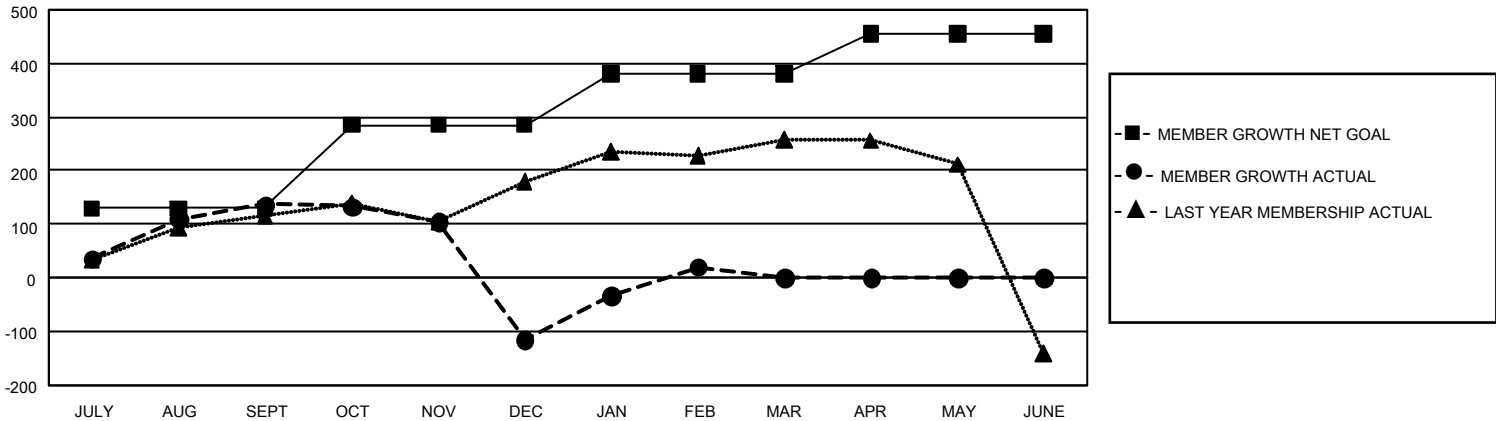
Clubs			
RESULTS FOR 2021-2022			
QUARTER	NEW CLUB GOAL	NEW CLUBS	DROPPED CLUBS
JULY/AUG/SEPT	12	6	1
OCT/NOV/DEC	12	0	2
JAN/FEB/MAR	6	3	1
APR/MAY/JUNE	3	0	0

Members			
RESULTS FOR 2021-2022			
QUARTER	MEMBER GROWTH NET GOAL	MEMBER GROWTH ACTUAL	DROPPED MEMBERS ACTUAL (including transfers)
JULY/AUG/SEPT	130	266	115
OCT/NOV/DEC	155	128	363
JAN/FEB/MAR	95	216	67
APR/MAY/JUNE	75	0	0

GOALS AND ACTUAL NEW CLUBS CUMULATIVE



GOALS AND ACTUAL MEMBERS CUMULATIVE



DROPPED CLUBS: 4	119 CLUBS OF 305 ADDED 1 OR MORE NEW MEMBERS	<u>GENDER DISTRIBUTION</u>	
		MALE 3,630 (50.28%) FEMALE 3,589 (49.72%) NON BINARY 0 (0.00%) PREFER NOT TO ANSWER 0 (0.00%)	
<u>DROPPED MEMBERS</u>		CLICK HERE FOR CUMULATIVE MEMBERSHIP DATA	TOTAL FAMILY UNIT MEMBERS 504
DECEASED 33 CLUB CANCELLED 47 OTHER 465 TOTAL 545	FAMILY MEMBERS PAYING HALF DUES 273		